

NATIONAL SHRINE GROTTTO OF OUR LADY OF LOURDES

On the Campus of Mount St. Mary's University, Emmitsburg, Maryland

NATIONAL SHRINE GROTTTO MONTHLY BULLETIN | June 2017



Father's Day

June 18, 2017

Reconciliation, 11 a.m.
Mass, 12 p.m.

Be sure to wish your dad or grandfather a happy Father's Day, or say a prayer for him if he has passed on. Our spiritual fathers reflect the love of God to us on a daily basis as well.

Enroll your father!

www.nsgrotto.org/mass-enrollment.html



Sacred Heart of Jesus

June 23, 2017

Novena, Exposition
and Benediction, 11 a.m.

O my Jesus, you have said, "Truly I say to you, heaven and earth will pass away but my words will not pass away."

Sacred Heart of Jesus, I place all my trust in you!



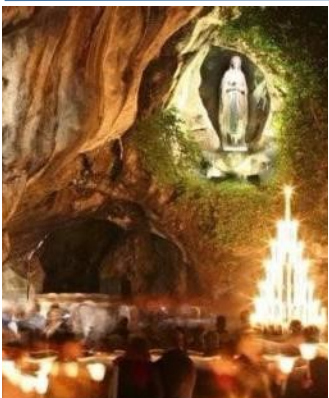
2017 Rome and Lourdes Europe Pilgrimage

~ 12 Days, November 6-17, 2017~

\$3599 PER PERSON

INCLUDES: Roundtrip Air from Washington, D.C.,
Visit Rome, Assisi, Florence, Genoa, Nice, Avignon,
Carcassonne and Lourdes!

To book your space, contact Ms. Jessica Root
(301) 447-5484 OR go to <http://www.nsgrotto.org/romelourdes.html> to see full agenda.



2018 France

Europe Pilgrimage

~ 12 Days, March 5-16, 2018 ~

\$3699 PER PERSON

INCLUDES: Roundtrip Air from Washington, D.C.,
Visit Paris, Lisieux, Caen, Normandy, Mont St. Michel,
Tours, Nevers, Paray le Monial, Ars, and Lourdes!

To book your space, contact Ms. Jessica Root
(301) 447-5484 OR go to www.nsgrotto.org/2017-pilgrimage.html to see full agenda.

Perpetual Help

June 27, 2017

Reconciliation, 11 a.m.
Mass, 12 p.m. in St. Mary's Chapel

Ask for the intercession of
Our Lady of Perpetual Help ~

Light a candle to light your
way to compassion!

www.nsgrotto.org

Hours: 9 a.m. to 4:30 p.m. daily (gates close at 5 p.m.) | Mass: Saturday and Sunday 12 p.m. | Reconciliation: Saturday and Sunday 11 a.m.
Shuttle: Transportation is available from the parking lot to the Miller Family Visitors Center. Call (301) 447-5318 for reservations.



16330 Grotto Road, Emmitsburg, MD 21727, (301) 447-5318, www.NSGrotto.org





Request a Prayer



Mass Enrollment



Light a Candle



Donate Now

Request during your visit, online at NSGrotto.org or call (301) 447-5318

Love as God Loves Us Reflections by Fr. Mike Messaro, M.S.S.C.C.

Assuming you and I have a likeness to our Creator, and that there is some semblance of good in us, then God is strongly moved to love us. Maybe we aren't as nice and lovable as we might think we are. And for anyone to love us, even God, it takes a certain amount of gritting of teeth and a lot of tolerance to put up with us. Yet, he does his best. Now he wants us to do our best when it comes to our loving others who might not be easy to love either.

"This is my commandment," say Jesus: "Love one another as I have loved you." That means we are to love the difficult, the bothersome, the irritating, the not-so-easy-to-love, just as Jesus is loving us. We give him a hard time, others give us the same. He overcomes the obstacles we put up for him to love us, we are to overcome the obstacles others place in our way that make it hard to love them. It boils down to this. No matter how tough some of us make

it for anyone to love us, God loves us anyhow; we are to love others with the same determination.

Upcoming Spiritual Activities

More activities listed on nsgrotto.org/spiritual-activities.html

First Saturday Devotions	June 3
Grotto Cave Mass	June 4
Lourdes Rosary Crusade	June 10
Bilingual Mass	June 10
Father's Day Mass	June 18
Sacred Heart of Jesus	June 23
Our Lady of Perpetual Help	June 27

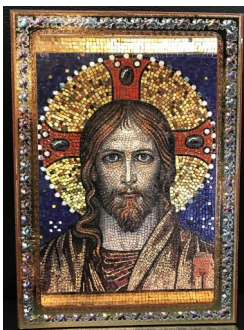


Image of Jesus
 ~ Jesus mosaic replica plaque ~
Exclusively at St. Bernadette's Shoppe
(301) 447-5444

Now available, a 4.5 x 5" plaque of the unique, one-of-a-kind Jesus mosaic located in St. Mary's Chapel at the National Shrine Grotto. Call to reserve your statue today!



A Final Resting Place

Consider Mount St. Mary's Cemetery as a final resting place for yourself or someone close to you. Located on Saint Mary's Mountain and near the National Shrine Grotto of Our Lady of Lourdes, the Mount Saint Mary's Cemetery offers columbariums for cremation remains. Contact Jessica Root (301) 447-5484 or jroot@msmary.edu.



Schedule a Retreat

We offer areas throughout the holy grounds that you may reserve on an hourly basis for your group's pilgrimage. Lunch options available. Contact Jessica Root (301) 447-5484 or jroot@msmary.edu.

Hours: 9 a.m. to 4:30 p.m. daily (gates close at 5 p.m.) | Mass: Saturday and Sunday 12 p.m. | Reconciliation: Saturday and Sunday 11 a.m.

Shuttle: Transportation is available from the parking lot to the Miller Family Visitors Center. Call (301) 447-5318 for reservations.